



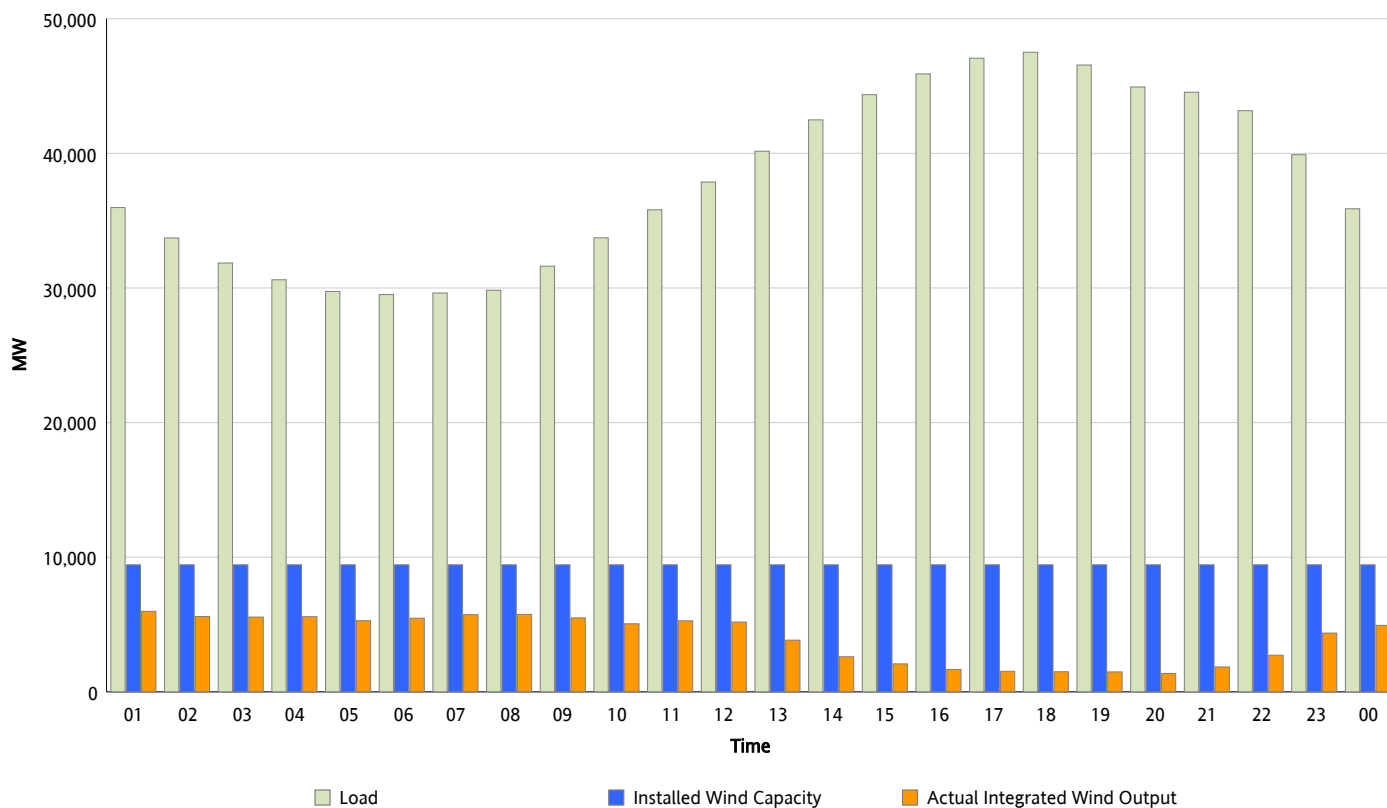
ERCOT Grid Operations

Wind Integration Report : 05/06/2012

Peak Load	47,509 MW
Load Peak Hour (HE)	18
Wind Over Peak	1,497 MW
Wind Record 04/13/12	7,925 MW
Max Wind Value*	6,201 MW
Wind Peak Time	00:21
Wind Integration %	17.03 %

Hourly Average Actual Load vs. Actual Wind Output

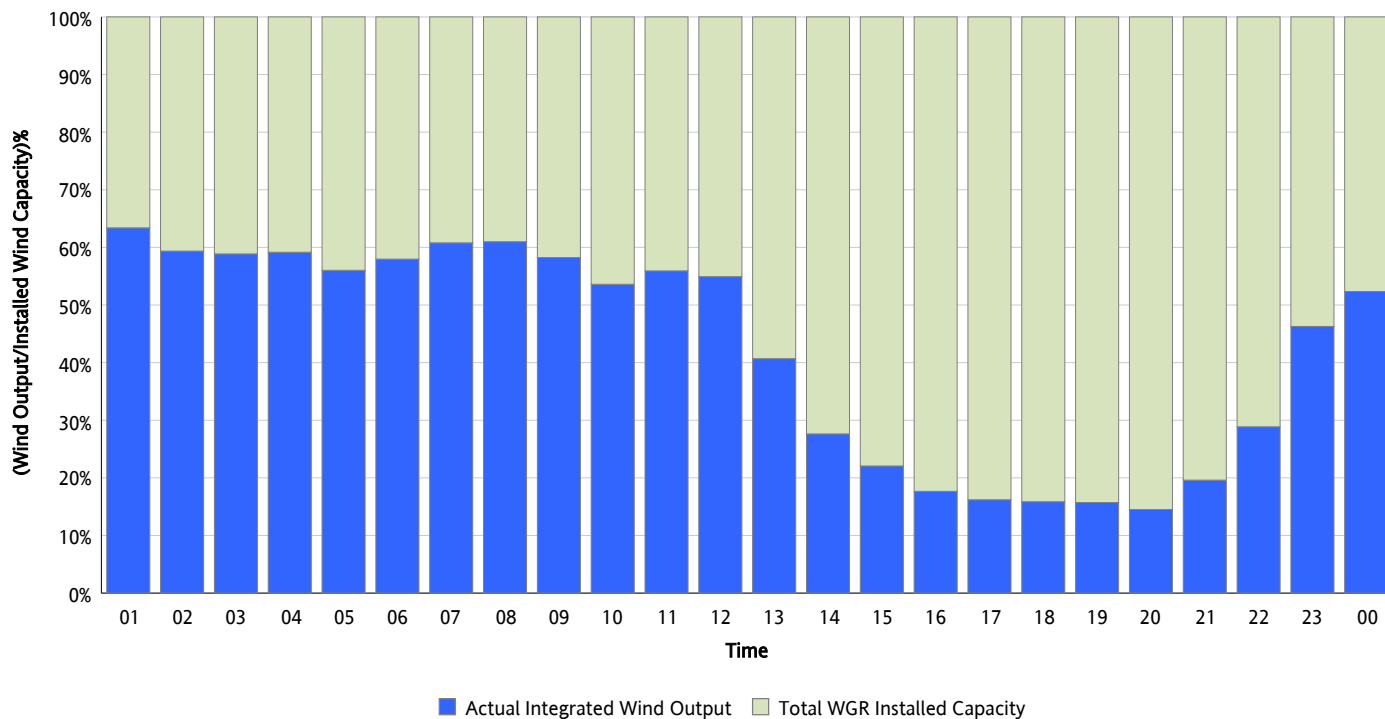
05/06/2012



* Wind Record and Wind Max represent instantaneous values and the rest of the values are integrated over the hour

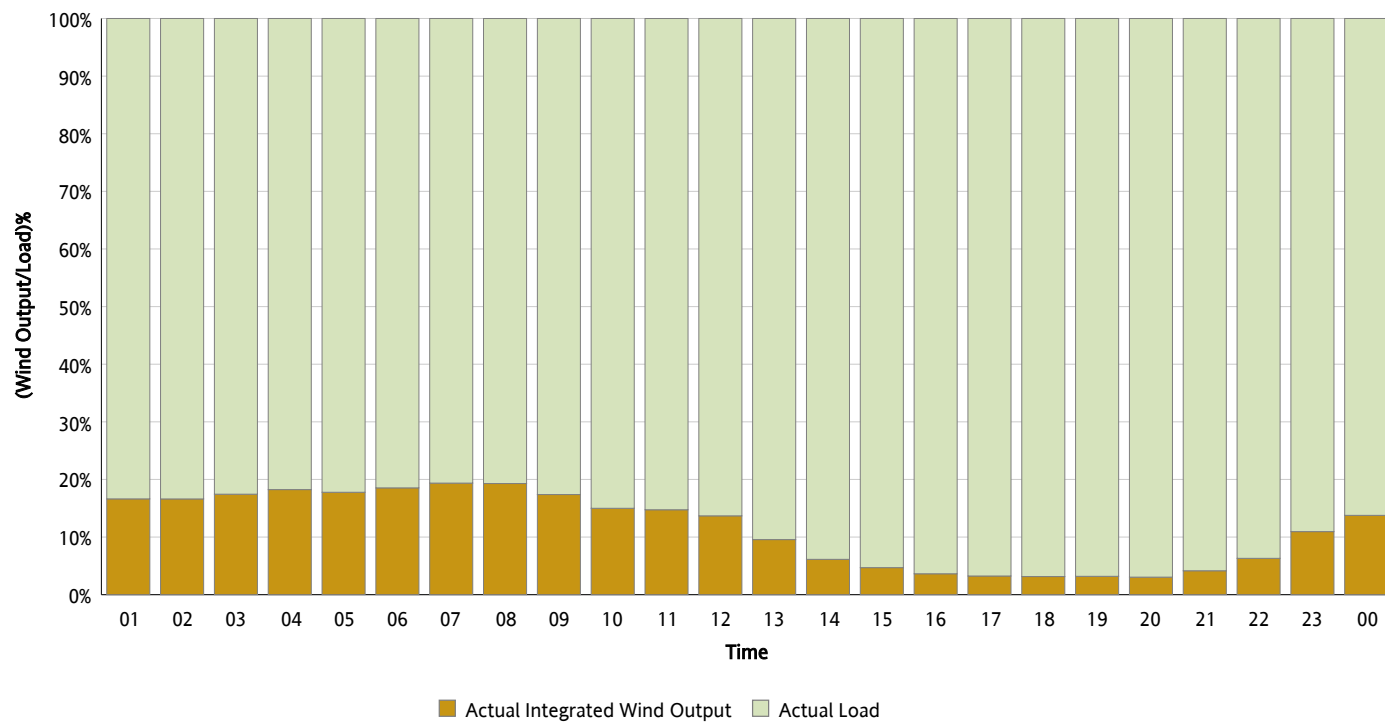
Actual Wind Output as a Percentage of the Total Installed Wind Capacity

05/06/2012



Actual Wind Output as a Percentage of the ERCOT Load

05/06/2012



ERCOT Load vs. Actual Wind Output

04/29/2012 - 05/06/2012

